

# Grandma Had a Wild Side

*Fabrics by  
MaryJane Butters*



Quilt designed by Gail Kessler

Quilt size: 58" x 58"



*Andover  
Fabrics™*

**makower uk®** 1384 Broadway • New York, NY 10018  
(800) 223-5678 • [www.andoverfabrics.com](http://www.andoverfabrics.com)





**makower uk®**

1384 Broadway  
New York, NY 10018

(800) 223-5678

www.andoverfabrics.com

# Grandma Had a Wild Side

*Fabrics by  
MaryJane Butters*

*Fabrics shown are 20% of actual size.*

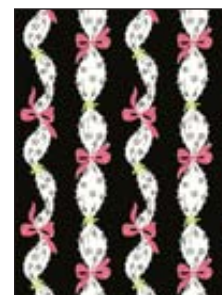
*Fabrics used in Pink/Black quilt pattern are indicated in red*



4356-K 1½ yards



4357-L 1¼ yards



4360-K 1⅛ yard



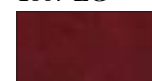
1867-P4  
¼ yard



1867-O7



1867-LG



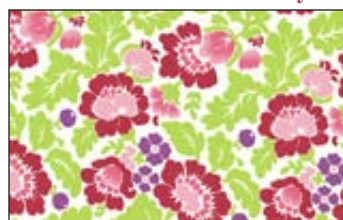
1867-R9



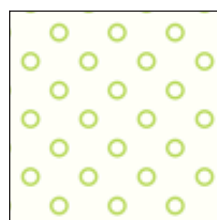
1867-K2



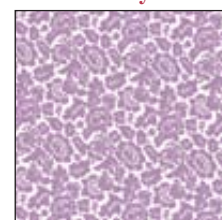
4358-L ¾ yard



4359-L ¾ yard



4361-L ¼ yard



4362-P ⅔ yard



4356-N



4357-N



4360-T



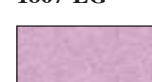
1867-G3



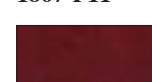
1867-L2



1867-LG



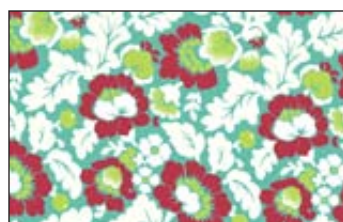
1867-P11



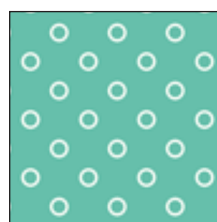
1867-R9



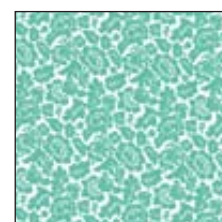
4358-N



4359-T



4361-T ⅓ yard



4362-T ¾ yard  
(includes binding)

**Kitting chart  
for Pink/Black  
version of  
quilt.**

*Kit requirements  
are based on a  
minimum of 15  
yards per bolt*

Black Quilt	Brown Quilt	10 kits	20 kits	30 kits	Black Quilt	Brown Quilt	10 kits	20 kits	30 kits
4356-K	4656-N	1	2	3	4362-T	4362-T	1	1	2
4357-L	4357-N	1	2	3	4361-T	4361-L	1	1	1
4358-L	4358-N	1	1	2	1867-P4	1867-G3	1	1	1
4359-L*	4359-T	1	1	2	4361-L	1867-LG	1	1	1
4360-K	4360-T	1	2	3	<b>Backing*</b>				
4362-P	4362-P	1	1	1	4359-L	4359-T	3	5	8

*\*Yardage needed for backing (3¾ yards or two 66" x WOF lengths per kit)*